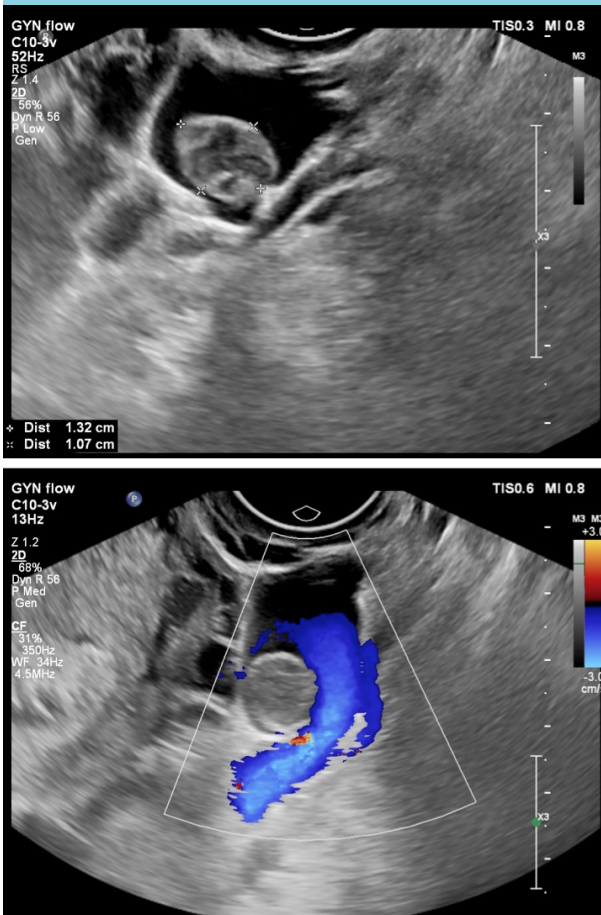


# An unusual complication of pregnancy

B. van Erven<sup>1\*</sup>, L. de Wit-Zuurendonk<sup>2</sup>, E. Laupman-Koedam<sup>3</sup>, L. Nieuwenhuizen<sup>1</sup>

Departments of <sup>1</sup>Internal Medicine, <sup>2</sup>Gynaecology, <sup>3</sup>Radiology, Maxima Medical Centre, Veldhoven, the Netherlands. \*Corresponding author: britt.van.erven@mmc.nl

**Figure 1.** Pelvic ultrasound showing a 1.0 x 1.3 cm round echogenic structure on the right side of the uterus (upper panel) with absence of flow as confirmed by Doppler (lower panel)



## CASE REPORT

A 33-year-old female was referred to the Department of Gynaecology because of an aberrant ultrasound obtained by her obstetrician. She presented at eight weeks gestation with her fourth pregnancy. Previous pregnancies were uncomplicated. She felt otherwise well. Ultrasound demonstrated an intact gravidity and a 1.0 cm x 1.3 cm round echogenic structure on the right side of the uterus, which seemed to be located in a dilated vein (figure 1).

## WHAT IS YOUR DIAGNOSIS?

See page 380 for the answer to this photo quiz.