

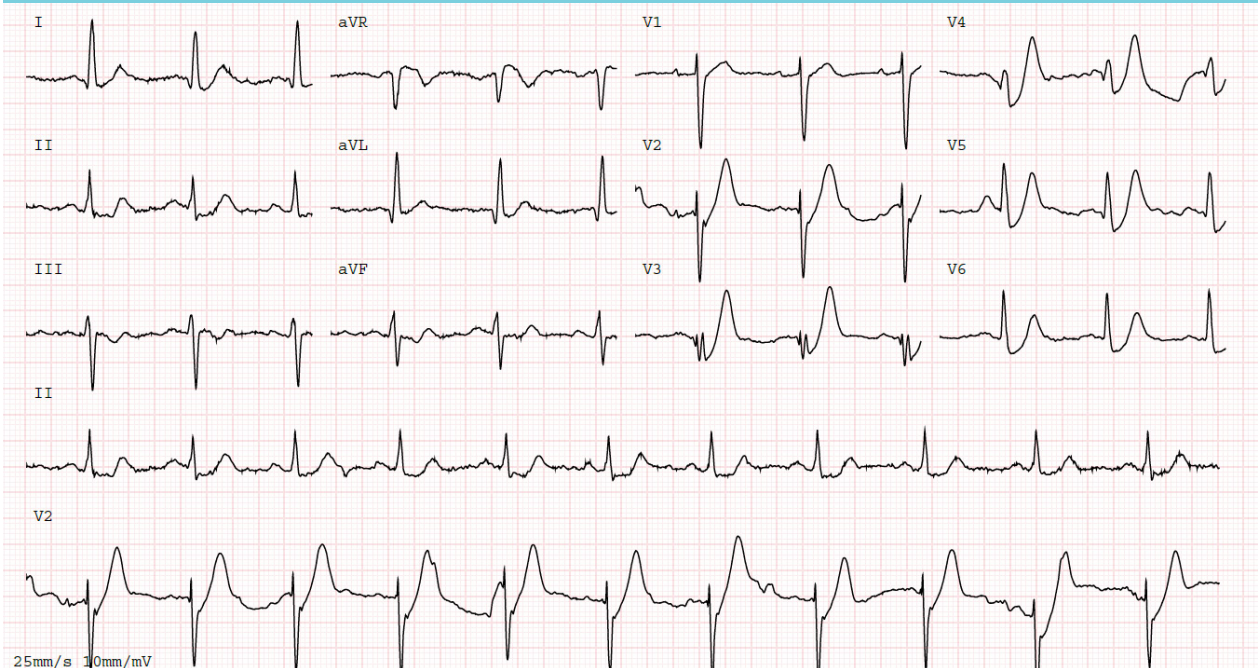
A pivotal electrocardiographic presentation: reading between the lines

E.M. Vilela*, D. Caeiro, J. Primo, P. Braga

¹Cardiology Department, Gaia Hospital Centre, Vila Nova de Gaia, Portugal.

*Corresponding author: eduardomvilela@gmail.com

Figure 1. Admission electrocardiogram



CASE REPORT

A 47-year-old male patient presented to the Emergency Department (ED) of our hospital due to intense and oppressive chest pain which had started about 30 minutes prior to admission. Complaints were associated with diaphoresis, and were not significantly altered by body position or breathing pattern. He had no other symptoms. The patient was a current smoker with no prior relevant medical history or medication.

On admission, he was symptomatic, haemodynamically and electrically stable, and afebrile, with no signs of pulmonary or peripheral congestion.

Given his presentation, an electrocardiogram (ECG) was performed upon arrival to the ED (figure 1).

WHAT IS YOUR DIAGNOSIS?

See page 298 for the answer to this photo quiz.